



THE
AMERICAN
CHESTNUT
FOUNDATION®

SAVING A TREE; CREATING A *MOVEMENT*

November 17, 2018 Maryland Chapter Meeting
Lisa Thomson, TACF President & CEO

Honoring the past looking to the future






THE
AMERICAN
CHESTNUT
FOUNDATION®

2017-2027 STRATEGIC PLAN





***Our Vision is a robust eastern forest restored
to its splendor***

***Our Mission is to return the iconic
American chestnut to its native range***

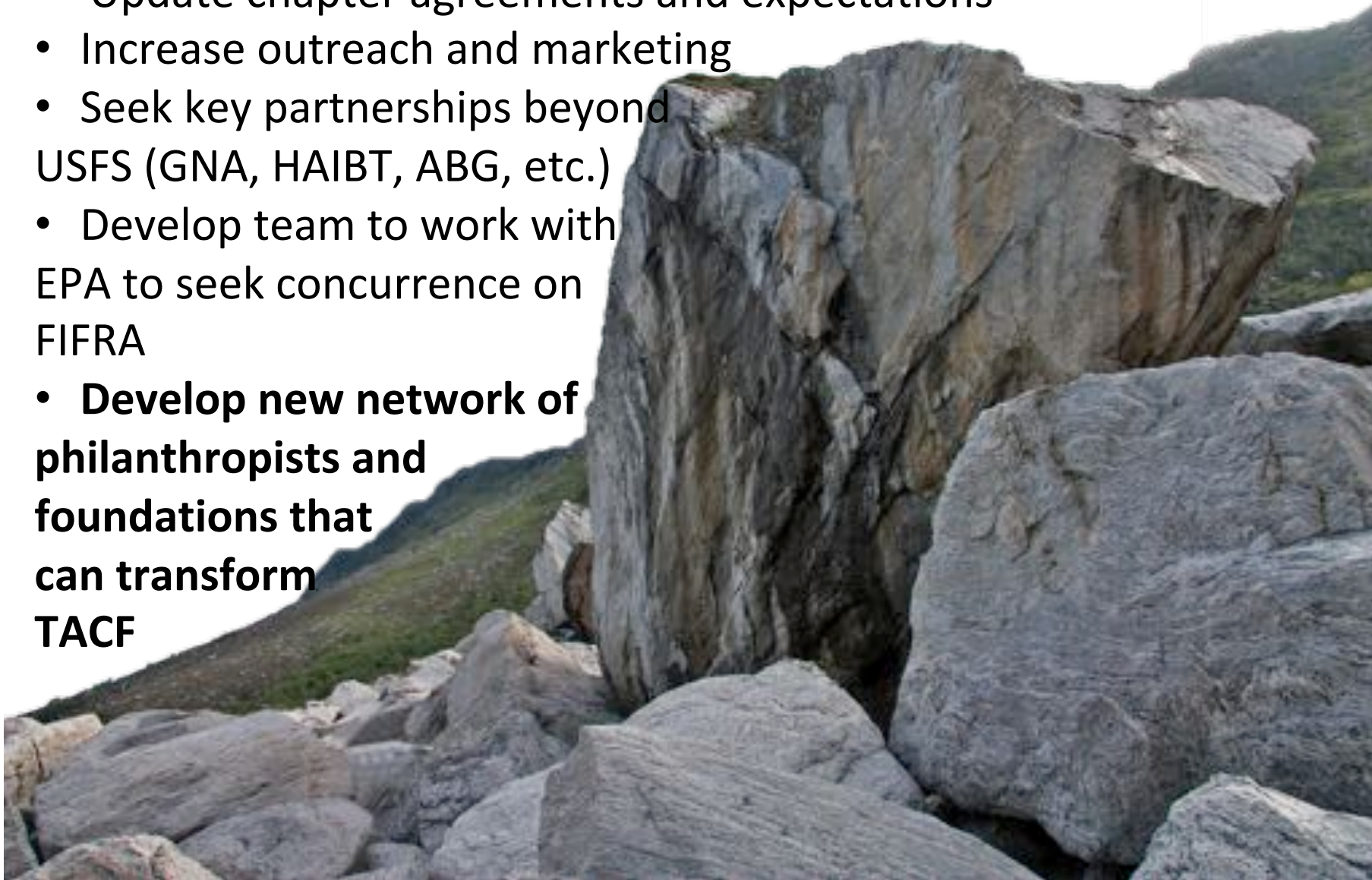
BIG ROCKS

- Strategic Planning Process—Complete!
- 10 year Breeding Plan-Complete!
- USFS/NRCS MOU renewed
- Support for SUNY-ESF Chestnut Project solidified
- Professional team built
- Fundraising a priority & donor base expanded



BIG ROCKS

- Update chapter agreements and expectations
- Increase outreach and marketing
- Seek key partnerships beyond USFS (GNA, HAIBT, ABG, etc.)
- Develop team to work with EPA to seek concurrence on FIFRA
- **Develop new network of philanthropists and foundations that can transform TACF**



Building relationships: Wally → Tom → Wally
→ Lisa → Jared → Jeremy





Visit to Mt.
Desert Island,
Maine to the
estate of
known
philanthropist

**HALF-EARTH:
HOW TO SAVE THE NATURAL WORLD**

A conversation with
Edward O. Wilson
Paul Simon

Moderated by
Thomas L. Friedman

Half Earth
The science of why and how to save the world's
endangered biodiversity

Half Earth
AMNH
American Museum of Natural History
#HalfEarth







Science Review August 20-22

A notable strength of The American Chestnut Foundation is its willingness to periodically invite outside scientists to review its research strategy and processes.

TACF... has positioned itself to be one of the world's model programs for the rescue and restoration of a forest tree species facing functional extinction.

The existing staff, from top to bottom, appear to be excellent.

... the current Strategic Plan and the 3- BUR documents to be excellent for defining goals, strategies, missions and visions.

We applaud TACF's adoption of cutting-edge methods and tools ...

The importance of the project database, and its continued development and maintenance, can't be overemphasized





UNITED STATES
ENVIRONMENTAL
PROTECTION AGENCY





Safety Plans and Policy



Thanks to the generosity from our membership and lead donor Dick Will, we finally have a greenhouse and two shade houses. Gamechangers!



QUESTIONS AND DISCUSSION